

Cable Ladder System: Al Fareed Cable Ladders are engineered for heavy-duty cable support, offering superior strength, ventilation, and durability for industrial and commercial applications. Manufactured using high-quality steel and compliant with IEC 61537 and global standards, our cable ladders ensure reliable performance, easy installation, and long service life with GI or HDG finishing options.

Width : 100 mm to 1200 mm

Height : 50 , 75, 100, 150, 200 mm

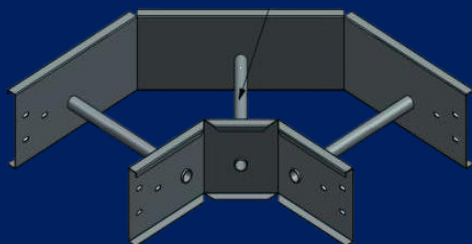
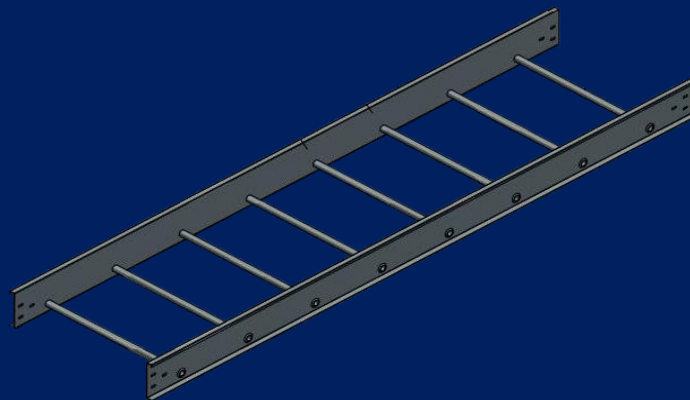
Thickness : 1.5 , 2.0, 2.5 mm

Length : 2.44 Mtr, 3.0 Mtr

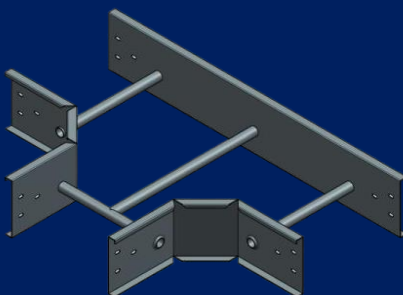
Finish : Hot Dipped Galvanized
Mill Galvanized
Aluminum
Stainless Steel
Powder Coated

Design Standard: IEC 61537 & NEMA VE-1

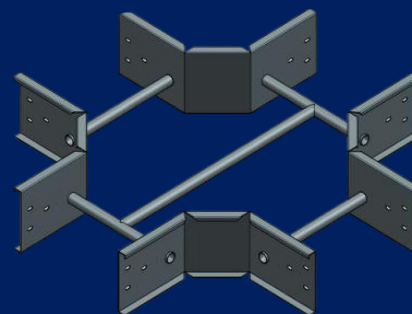
Cable Ladder



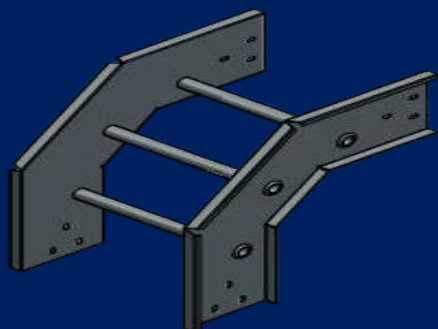
HORIZONTAL ELBOW



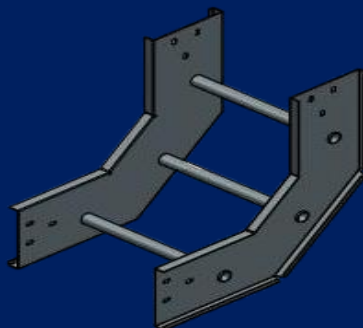
HORIZONTAL TEE



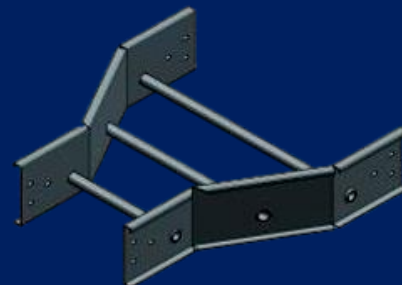
HORIZONTAL CROSS



OUTSIDE RISER



INSIDE RISER



STRAIGHT REDUCER